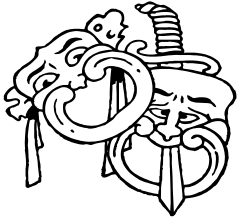




Burning News from the Ipswich Incinerator

The MAY 2005 newsletter of Ipswich Little Theatre



WOLF LULLABY

Strange 'Times'

A young girl who was blown out to sea on a set of inflatable teeth was rescued by a man on an inflatable lobster. A coastguard spokesman commented, "This sort of thing is all too common". *The Times*

Wolf Lullaby is a compelling play about the disturbing subject of juvenile murderers. It asks not only why they occur but how we deal with it. A small child is murdered and suspicion falls on Lizzie. Her mother believes her daughter could be guilty, but her father is full of denial. Set in an Australian country town, this play holds up a mirror to society and reflects reality rather than what we'd like to see. It is a piece of drama not to be missed!

Ipswich Little Theatre, in 2005, has a relationship with the Queensland Conservatorium of Music whereby students of music composition have the opportunity of working with directors of ILT plays to develop an original score for each play. QCM student, Raymond Lawrence, has worked with Suzanne and Liz to write a score that responds to the themes of *Wolf Lullaby*. This will add another interesting component to an already fascinating production.

INSIDE BURNING NEWS THIS MONTH:

- Group News Page 2
- Vincent in Brixton Page 3
- Selection C'tte news Page 3
- Old Poet in Residence Page 4

If you would like to support the Ipswich Arts Council, please consider seeing *Wolf Lullaby* on their social night – **Wednesday 15 June** from 7.30 pm. A light supper will be provided – tickets \$20 from Suzanne Matulich 3281 4748.



Original image for *Wolf Lullaby* by Arts Alive student Daajan Bain aged 7 (daughter of cast member Majella Gee)

The cast of *Wolf Lullaby* is *Lizzie*, Kelsie McDonald, *Angela*, Jean Goodwin, *Warren*, Ryan Tucker and *Sgt Rae*, Majella Gee. Director is Suzanne Matulich and Assistant Director, Liz Boekholt. Phil Holmes is in charge of lighting and sound.

The season for *Wolf Lullaby* is **10/11 and 16/17 June** at 8 pm. Tickets for all four nights are available as usual from the Ipswich Visitor Information Centre in Queen's Park, 3281 0555.

Take up the challenge and come along to this interesting and thought provoking play.

S-Troupe - director Di Johnston

An article in the Queensland Times described the S-Troupe float in the recent Ipswich Festival parade as the most energetic and it certainly was.

Our Mother's Day afternoon tea was held on the first Saturday in May and was very successful. Students served their Mum a cuppa and took trays of food around, performed a few little items about Mothers and then gave them a gift. Many thanks to Jim Orr for preparing all the cuppas. We are now down to hard work again for the Theatre Restaurant in July. Start getting your tables organised for bookings – 12 per table – menu items are still being organised but cost should be around \$20 per head for a wonderful chef-prepared 3 course meal and show.

Crossfyre Young Theatricals - director Suzanne Matulich

Rehearsals are continuing to go well for Circus of Dreams. Many thanks to the CYTI students who have contributed ideas or plays for this interesting collage drama.

SmartArts - Junior Theatre - director Liz Boekholt, assustant Lana Gishgariany

No report

Librarians - Relle Scott and Patti Pratt

Perseverance does pay off. After many polite and carefully worded emails, the rights for Wolf Lullaby have finally been secured by Relle. All that activity just so that we can pay them a handsome amount in royalties. Imagine how long it would have taken if we had wanted them to pay us!

Lighting & Sound - Phil Holmes

Thanks go to Phil for his eagle eye in spotting potential disasters before they happen – good to know that the sound and lighting equipment is being monitored prior to a play opening. Our theatre is certainly lucky to have such dedicated 'back stage' people as Liz Boekholt (last year's L&S person) and Phil.

**Theatre Activity Nights**

May's night of Shakespeare with Relle Scott was very successful. Nice to see more men than women attending a theatre event for a change. Everyone took an active part in an interesting and sometimes challenging set of exercises designed to give confidence in dealing with the language of Shakespeare. Thanks so much Relle.

JUNE - Improvisations and Theatre Games with Deborah Watson, director of FringeDwellers

Theatre. Here is what she says about the planned June workshop:

Have you ever wanted to unlock your inner child, to delve deep within the recesses of your subconscious and unlock the secrets of your youth. Well come and indulge your desire, with the help of Drama facilitator Deb Watson we won't just unlock your inner child we will let the little brat free with a night of frivolous play, irreverent behaviour and just plain silliness!! Come discover what makes a truly great actor - the ability to be not just childlike but childish!!!

A Quote to Ponder on ...

There's no difference between myself onstage and off. None. I just speak louder. Theatre is just a way to which you can inflict yourself on the maximum number of people.

Quentin Crisp



If you are one of the wonderful ILT members who has volunteered to work front of house or in the bar and kitchen, please remember that we would prefer you to wear 'theatre blacks' to give a professional image for our patrons.

A new range of ILT polo shirts is soon to be available. These will be quality black polo shirts with a white/greyish trim on collar and sleeves and two screenprints including a large image of our Incinerator theatre on the back. Contact Suzanne 3281 4748 if you would like to order one, \$20 each and sizes s,m,l,xl,xxl,xxxl.



Brisbane City Council Mayor promises \$7.5m for Brisbane's Powerhouse

Lord Mayor Campbell Newman says Brisbane City Council's allocation of \$7.5 million for Brisbane's Powerhouse is security for its future.

The record funding will be paid over three years.

Councillor Newman says it will enable the Powerhouse to remain a leading and independent centre of arts and culture.

"\$2.5 million each year for the next three financial years," he said.

"This is to ensure that they can go forward with confidence and continue their collaborations with other artistic centres around the world, and deliver world-class performances to the people of Brisbane."

Vincent in Brixton

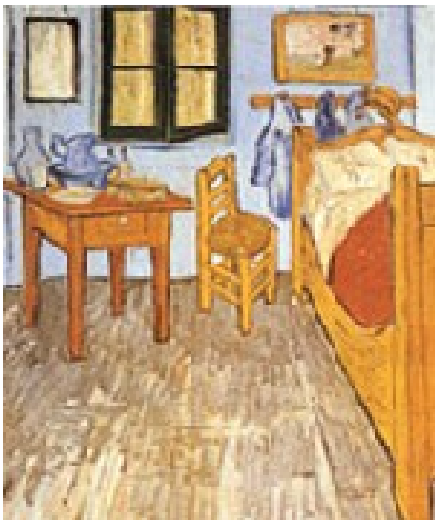
London. 1873. A rough-edged young Dutchman takes lodgings in a house in the poor suburb of Brixton. There he discovers, for the first time, love, sex, sorrow and, perhaps most importantly, art. This brief period awakens, in the young Vincent Van Gogh, the sleeping seeds of his genius.

Based on a real episode in the artist's life, this Olivier Award-winning play (Best Play, 2003) has touched audiences around the world. Scott Witt (Road to the She-Devil's Salon, Scapin, God is a DJ) directs this surefire winner.

Season continues till 4 June.

To book tickets please call 136 246 or go to www.qtix.com.au.

Tickets From \$35.75 – \$57.75, 24 & Under: \$20



Selection Committee News AUDITIONS

Yes, it will soon be audition time again! Not only one, but two plays for you to try out for.

1. The first is the much anticipated - *Money and Friends* by David Williamson to be directed by Lee Gerchow.

This is one of Williamson's comedies and, as they say in the classics, 'if you loved *After the Ball*, you'll love *Money and Friends*'.

The audition will be held on
Monday 8 August at 7.30 pm
in the Jean Pratt Building.

2. The second audition is for our annual Theatre Restaurant. This year's offering is *Highland Fling* with directors Gavin Turner and Relle Scott.

The audition date is
Monday 15 August also at 7.30 pm
in the same venue.

For more information about either play or to discuss the season dates and expectations required of the actors, please contact the Selection Committee Convener, Relle Scott on 3816 0969

2006 ILT Program

No, the 2006 program is not ready to be released yet. However, it is really encouraging to know that there has been a much larger amount of interest shown by directors in being part of the next year's program than in recent years. This is a really healthy sign that we have a vibrant and active theatre group. We also have quite a few new, talented and enthusiastic actors who have joined our society this year. This is in contrast to some other community theatres in south east Queensland who are finding that interest and support of their theatres is decreasing. Well done, Ipswich Little Theatre members!



Ipswich Little Theatre
PO Box 154
IPSWICH Q 4305

Editor
Suzanne Matulich
suzanne@matulich.org

OUR WEBSITE IS READY!
Check out

www.ipswichlittletheatre.com.au



Poet-in-Residence for Queensland

Queensland's poetry scene will receive a boost this year with the appointment of a Poet-in-Residence funded by the State Government.

Minister for the Arts Anna Bligh said expressions of interest were being sought from local, national and international poets for the three-month Brisbane residency between July and September this year.

"This is an exciting opportunity for a local or international poet to be part of a unique program that will help heighten the profile of poetry in Queensland," Ms Bligh said.

"The chosen poet will be commissioned for a three-month period, working at the Queensland Writers Centre and The Judith Wright Centre of Contemporary Arts, and will produce a work or body of works and conduct educational activities for emerging poets during the residency.

"The poet will also work to increase awareness of and appreciation for poetry through partnerships and performances at Queensland's flagship events including the Brisbane Writers Festival, Queensland Music Festival and the Queensland Poetry Festival."

Poet-in-Residence program would be administered by the Queensland Writers Centre. This year marks the first of a three-year program.

The Government has provided \$50,000 in funding for the Poet-in-Residence program which includes artistic fees, travel, accommodation, marketing and administration costs.

Expressions of interest for the position close on 24 March. The poet will be chosen by a selection committee comprising representatives of the partner institutions and festivals.

For more information contact the Queensland Writers Centre on 3839 1243 or email qldwriters@qwc.asn.au.

Good Luck!

ILT is possibly entering two plays into the South East Queensland One Act Play circuit this year. This is very exciting news as both plays were written by Ipswich Little Theatre members!

Hunter to Trader, written by Alison Cooper has been cast and rehearsed specially for the festival circuit!

Background Music by Kevin Hallewell was part of the recent season *Missing Pieces*.

We wish the cast and directors all the very best for a challenging and exciting season this winter and look forward to reporting all their successes in Burning News. Good luck and enjoy the fun!

A nice reply that parents can use:
"You can't have everything - where would you put it?"

UPCOMING DATES @ ILT

- 8/18 June **Wolf Lullaby**
- 7 June Theatre Activity Night
- 5 July Theatre Activity Night
- 2 August Theatre Activity Night
- 8 August **AUDITION**
Money and Friends
- 15 August **AUDITION**
Highland Fling
- 12/14 Aug **One Act Play Festival**
- 6 September Theatre Activity Night
- 4 October Theatre Activity Night
- 28 September/22 October
Money and Friends
- 1 November Theatre Activity Night
- 18 November/10 December
Highland Fling

Next ILT meeting
for 2005
Tuesday 14 June
7.30 pm

THANKS!

Cr Charlie Pisasale proudly supports Ipswich Little Theatre
by printing the Burning News for ILT. Thanks Charlie!